

Rail Workforce Management

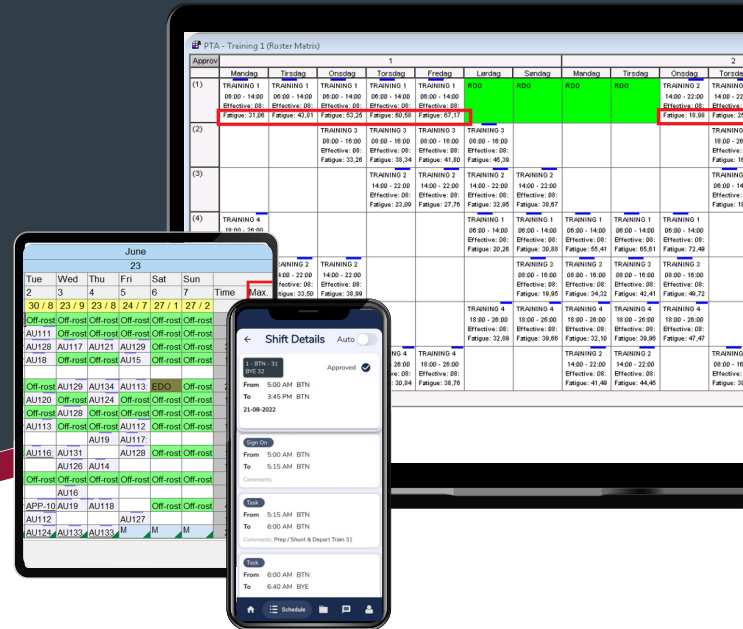


Solution Sheet for Rail

Trapeze Duty Suite is our rail industry-specific Workforce Management (WFM) Solution. It helps streamline rostering, forecasting, training and qualification records, and compliance.

Duty Suite also supports duty and roster planning, staff management, employee communication, automatic FAID scores, and automated wage calculations.

Our intuitive WFM tool meets many of the rail industry's needs and into the future.



RAIL INDUSTRY REQUIREMENTS

Automated view of **crew member fatigue** ratings, ensuring relevant shift availability

Automation of time-consuming **manual data entry** processes for roster creation

Clear overview of **rostering and planning**

Compliance and accreditation management of rostering system

Assurance crew members are qualified and vetted to drive rostered journeys

Verification processes to validate rosters are fit for purpose and compliant

TRAPEZE WFM BENEFITS

FAID feature automatically calculates time, attendance, and fatigue ratings, ensuring the entire workforce stay within fatigue scores

Automated processes integrate seamlessly with other systems to minimise manual entry and human error – increasing efficiencies and reducing costs

Provides multiple and customisable rostering and planning displays

Incorporates and manages compliance and accreditation requirements, minimising non-compliance

Inbuilt qualification and license management ensures train drivers are only rostered on certified journeys

Simulation functionality feature validates timetables are functional without conflicts, based on specified rule sets

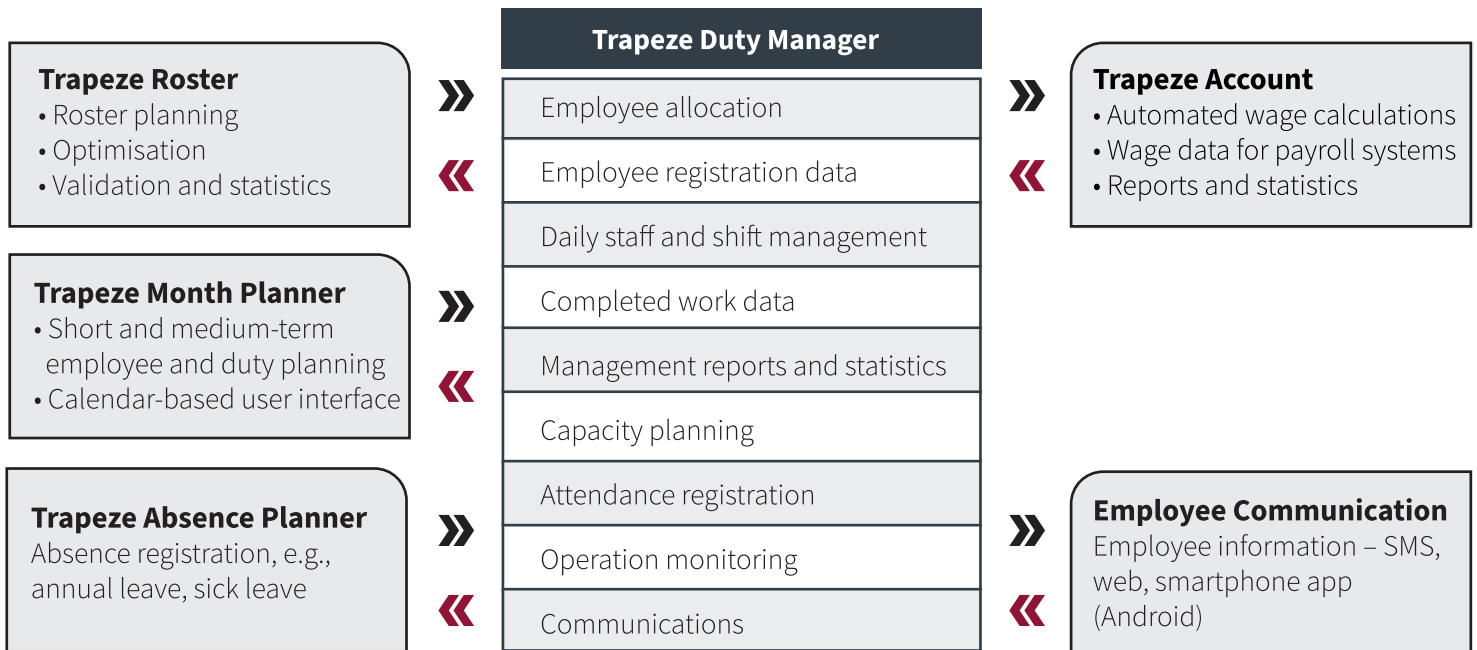
Rail Workforce Management



Solution Sheet for Rail

The Trapeze WfM solution allows rail operators to manage shifts and employees better by streamlining daily tasks to save time and costs. A conceptual view of the solution is shown below:

Trapeze Rail Workforce Management Solution

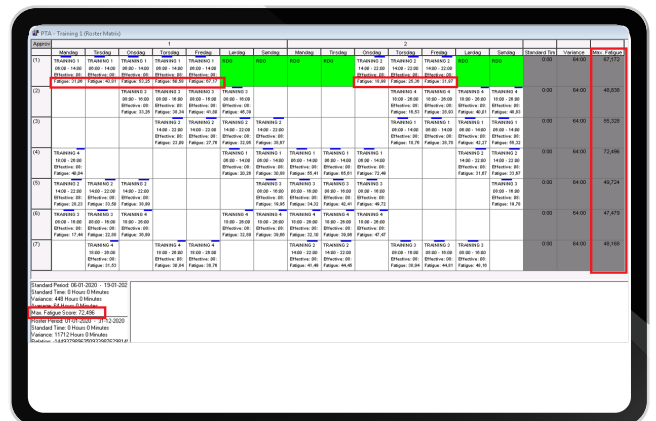


Some of the WFM solution features and benefits include:

Rostering Displays

The Trapeze Roster enables rail operations to enhance their capability and reduce overheads by applying workforce management process and procedures to the core rostering functions.

The system empowers your planners and rostering staff to create optimised rosters that consider enterprise bargaining rules, fatigue management and local operating procedures.



Our WfM software offers:

- Automatic “master plan” generation
- Roster simulation based on defined rule sets
- Job and duty import from up-stream systems
- Shift creation and edits
- Roster optimisation
- Roster validation against rules and regulations

Rail Workforce Management



Solution Sheet for Rail


		June							Time	Max.
No.	Employee	District/Category	Roster	1	Tue	Wed	Thu	Fri		
2005	Albert Larsen	South	Full-Time	Austrics4	Off-rost	Off-rost	Off-rost	Off-rost	Off-rost	Off-rost
2090	Anna Petersen	North	Extra board	Austrics8	Duty Dr	AU111	Off-rost	Off-rost	Off-rost	Off-rost
1000	Anne Jensen Vittrup	By	Full-Time 20	Austrics8	Duty Dr	AU128	AU117	AU121	AU129	Off-rost
1005	Annika Persson	By	Full-Time	Austrics8	Duty Dr	AU18	Off-rost	Off-rost	AU15	Off-rost
2085	Bunjamin Metin	South	Part-Time 28							
1010	Caroline Skovmand	By	Full-Time	Austrics8	Off-rost	Off-rost	AU129	AU134	AU113	EDO
1050	Christina Thomsen	North	Full-Time	Austrics8	Off-rost	Off-rost	AU120	Off-rost	AU124	Off-rost
2110	Corinne Nicole Lau	By	Full-Time 0.2	Austrics8	Duty Dr	Off-rost	Off-rost	Off-rost	Off-rost	Off-rost
1025	Daniel Hansen-Han	By	Full-Time	Austrics8	Duty Dr	AU113	Off-rost	Off-rost	AU112	Off-rost
4001	Einar Hansen	Train	Full-Time				AU19	AU117		
1055	Elen Christiansen	North	Full-Time	Austrics8	Off-rost	AU116	AU131	AU128	Off-rost	Off-rost
2065	Emil Hansen	North	Extra board				AU126	AU14		
2010	Fritz Mainz	South	Full-Time	Austrics4	Off-rost	Off-rost	Off-rost	Off-rost	Off-rost	Off-rost
8888	Hanne Hansen	Båd	Crew				AU16			
1040	Heidi Madsen	North	Full-Time	Austrics8	Duty Dr	APP-10	AU19	AU118	Off-rost	Off-rost
2075	Helmuth Walker	North	Extra board 3				AU112	AU127		
2050	Henning Nielsen	Train	Extra board	M		AU124	AU133	AU133	M	M

Month Planner


Month Planner is used to post-process long-term schedules after the roster has been completed and implemented in the accepted rotation plan.

Changes to the planned schedule are managed here, bringing greater flexibility and live management of approved rosters. The FAID score column clearly identifies crew member and driver shift availability.


The Trapeze WFM software offers:




Medium and long-term employee duty planning




Post-processing of rotation schedules



Planned absence management



Rules check graphical view



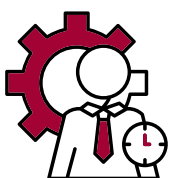
FAID live updates when changes are made

Web Based Employee Self Service

Our WFM solution enhances work-life balance for your employees by empowering them to manage rosters and shifts via the web or a Crew App. The system allows for employee self-service and allows them to view shifts, arrange shift swaps, and submit leave applications.

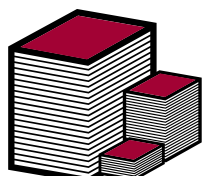
This is a fully web-based solution that also uses text messaging and smartphone apps. This not only improves communication and information exchange, but also makes signing in and time recording much simpler.

The web based application has been:



Utilised by
34,000
concurrent employees

Seen on average a
92%
reduction in paper
leave forms



Rail Workforce Management



Solution Sheet for Rail

Hear from our customers:

“Rail planning and workforce management will never be good enough without the right tools and mindset. However, it will always continually improve when the right solutions are available to help execute good ideas. Trapeze’s workforce management technology allows us to develop plans that are grounded with facts and evidence, and we trust the system outputs and results.”



Araz Zeighami, Personnel Planning Manager -
Train Division, Arriva Sweden

“With the optimisation module we can test several different scenarios in a short time and create several suggestions for duty plans.”



Nina Borgen, Payroll Coordinator
Keolis Norway

“Our expectations with the Trapeze system have been fully met. When you consider the extent of the system it is very easy to use. The processes are very clear, it’s easy to navigate, and you get your tasks done quickly.”



Christian Pettauer, CIO
WESTBahn Management, GmbH



Trapeze Group works with public transport agencies and their communities to develop and deliver smarter, more effective public transport solutions. For more than 25 years we have been *Here for the Journey*, evolving with our customers around the world to help them move people from point A to Z and everywhere in between.

Australia +617 3129 2092

Singapore +65 6226 0260

Middle East +971 4 252 6640

India +91 98104 07444

Africa +27 11 025 9970

TRAPEZE GROUP ASIA PACIFIC HEAD OFFICE

Level 25, 288 Edward Street, Brisbane, QLD 4000 Australia
info@trapezegroup.com.au | 1300 663 662
trapezegroup.com.au